

2025-26 Start Times & Busing Schedule

Board of Education Meeting
Jan. 16, 2025





Continuing the Build Timeline

September 2024

COMMUNITY FORUM

BOARD OF EDUCATION VOTES TO APPROVE
"OPTION B" FOR REDISTRICTING AND A
HIGH SCHOOL START TIME OF 7:20/25 A.M.

2025-26 ELEMENTARY, INTERMEDIATE SCHOOL, &
MIDDLE SCHOOL START TIMES & BUSING ROUTES
DEVELOPMENT STARTS

6



7

October 2024

INITIAL ELEMENTARY SCHOOL SECTIONS
FINALIZED

November 2024

DISTRICT BUS ROUTES REVIEWED

TEACHER PLACEMENTS SELECTED AND
FINALIZED

8



9

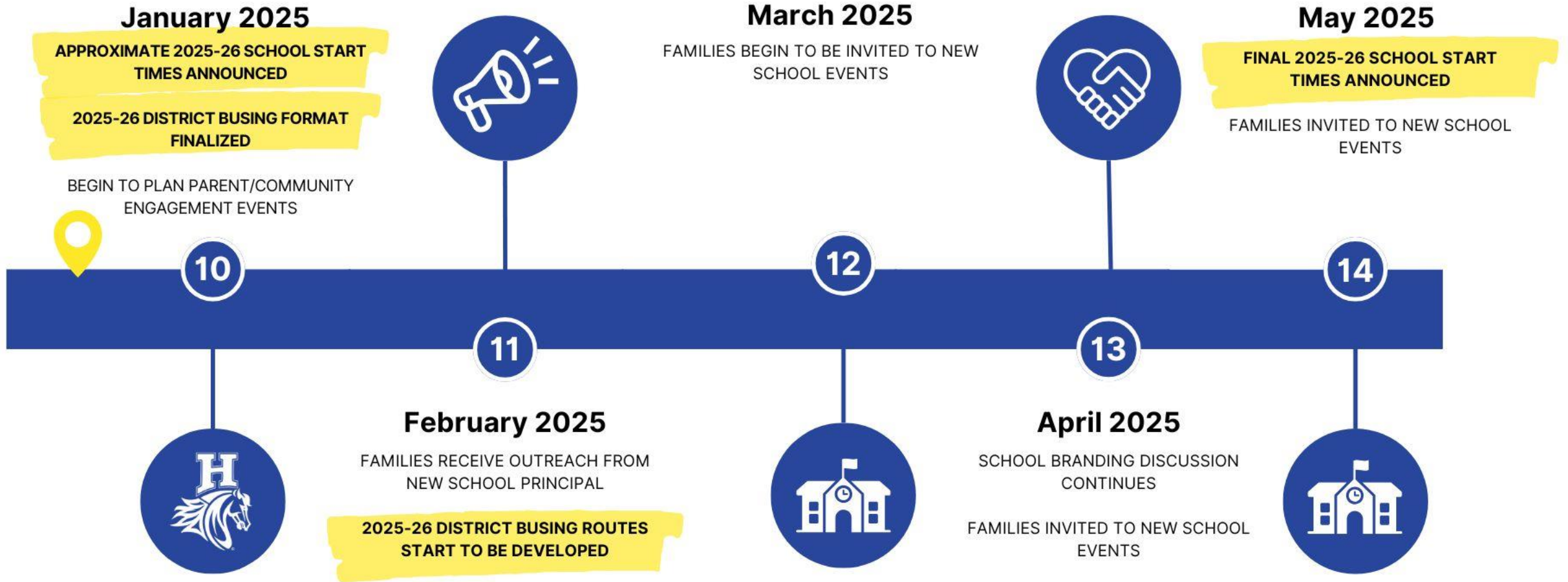
December 2024

FAMILIES RECEIVE NOTICE OF SCHOOL PLACEMENT
SOCIAL/EMOTIONAL RESOURCE AVAILABLE FOR PARENTS

PLEASE NOTE THAT TIMELINE MAY NEED TO BE ADJUSTED OR CHANGED



Continuing the Build Timeline



PLEASE NOTE THAT TIMELINE MAY NEED TO BE ADJUSTED OR CHANGED

District Start Time and Busing Goals

- 1** Align High School start time with BOCES start time as best as possible so that students can attend a full Horseheads High School class at the beginning or end of the day.
- 2** Correct late bus arrivals caused by conflicting school start and end times.
- 3** Minimize bus-to-bus transfers district-wide.
- 4** Unify IS/MS dismissals to better respond in case of an emergency.
- 5** Limit student ride times to one hour or less (time the bus is in motion), as best as possible.
- 6** Adhering to current staffing as best as possible for fiscal responsibility.
- 7** Address new extended instructional time for Grades K-6.





Current District Start/End Times

	Middle School	High School	Intermediate School	Elementary School
Start Time	7:45 a.m.	7:50 a.m.	8:25 a.m.	8:15 a.m.
End Time	3:05 p.m.	3:02 p.m.	2:20 p.m.	2:20 p.m.
Total Hours	7 hrs. 20 mins.	7 hrs. 12 mins.	5 hrs. 55 mins.	6 hrs. 5 mins.

NEW
STARTING
IN 2025-26

The elementary and intermediate instructional day will increase contractually by approximately one hour.





2025-26 District Start/End Times

	Middle School	Intermediate School	High School	Elementary School
Start Time	7:20 a.m. ±	7:20 a.m. ±	7:30 a.m. ±	8:40 a.m. ±
End Time	2:10 p.m. ±	2:10 p.m. ±	2:30 p.m. ±	3:26 p.m. ±
Total Hours	6 hrs. 50 mins.	6 hrs. 50 mins.	7 hrs.	6 hrs. 46 mins.

NOTE STARTING IN 2025-26

± Will be determined in the spring when specific start and end times will be completed from draft form.

The district will implement a new 2-tier busing system, switching from transporting Grades 7-12 and K-6, respectively, to → transporting Grades 5-12 and Grades K-4, respectively.



District 2025-26 Start Time and Busing Recap

- 1 High School start and end times aligns with BOCES so that students can attend a full Horseheads High School class at the beginning or end of the day.**
- 2 Start and end times are aligned, removing late bus arrivals.**
- 3 Bus-to-bus transfers have been minimized district-wide.**
- 4 IS/MS start times are unified so that students can be dismissed in case of an emergency.**
- 5 Majority of student ride times are projected to be 60 minutes or less.**
- 6 Tiered busing system adheres to current district staffing needs.**
- 7 The schedule addresses extended instructional time for Grades K-6.**





Thank You

